

## 2 Kanazawa Hakuchoro Hotel Sanraku

6-3 Marunouchi, Kanazawa 920-0937  
 TEL: 076-222-1212 FAX: 076-222-1120  
 URL: <https://sanraku.kenhotels.com/hakuchoro/>



Lobby



Large bath



■Number of seats  
**120** seats (Hosho)



■Traffic access  
 15-min bus ride from JR Kanazawa Station  
 (Get off at Kenrokuen and walk for 5 min.)  
 8 min by taxi from JR Kanazawa Station



■Hours  
 9:00am~9:00pm

■Date to start accepting reservation  
 At any time



■Accommodation  
 • Twin room: 76  
 • Japanese-style room: 9  
 Total: 85 rooms (approx. 200 people)



■Restaurants/Cafés  
 • Japanese restaurant, Kaga cuisine "Mahoroba"  
 Table: 40 seats, Japanese style: 12 seats  
 • Tea Lounge "Partie": 24 seats



■Parking Capacity  
**65** vehicles (1,000 yen/ night)  
 Free for 3 hrs for banquet users



■Remarks  
 Natural hot spring large bath(Hotel guests only)

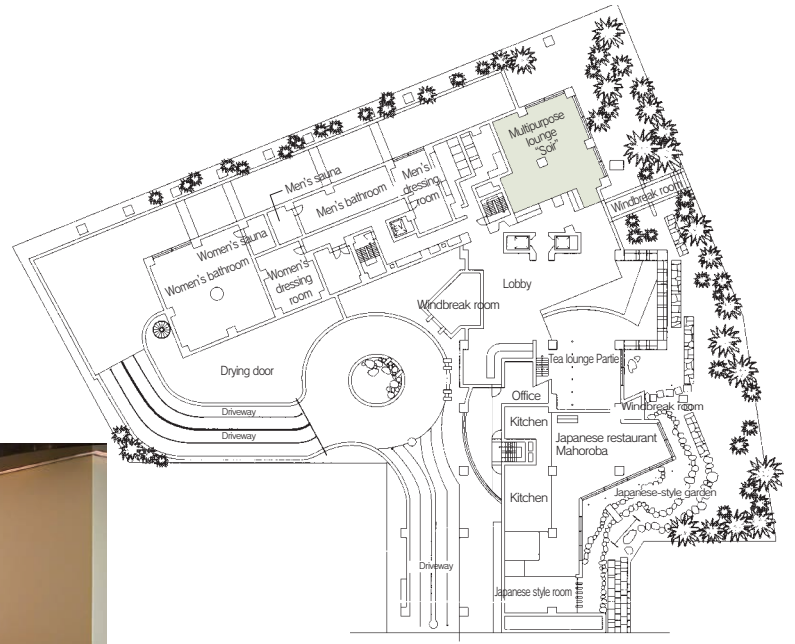
### ■Convention site

Site name	Floor	Area (㎡)	Width×Depth (m)(m)	Ceiling height (m)	Capacity (persons)				Remarks	
					Fixed seats	School	Theater	Seated		Buffet
Hosho	2	185	9.4×19.6	2.7	—	100	120	100	120	
Swan	2	195	10.2×17.8	2.7	—	—	—	—	100	
Lounge "Soir"	1	55	—	2.6	—	24	40	20	30	

Width × Depth and the floor area may differ depending on the shape of the room.

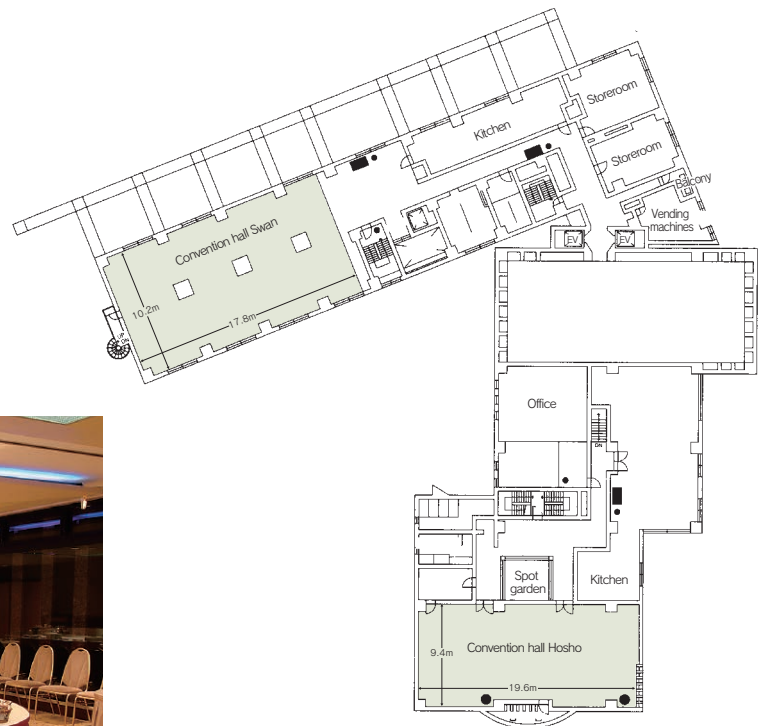
# Floor plan

## 1F



Soir

## 2F



Hoshō