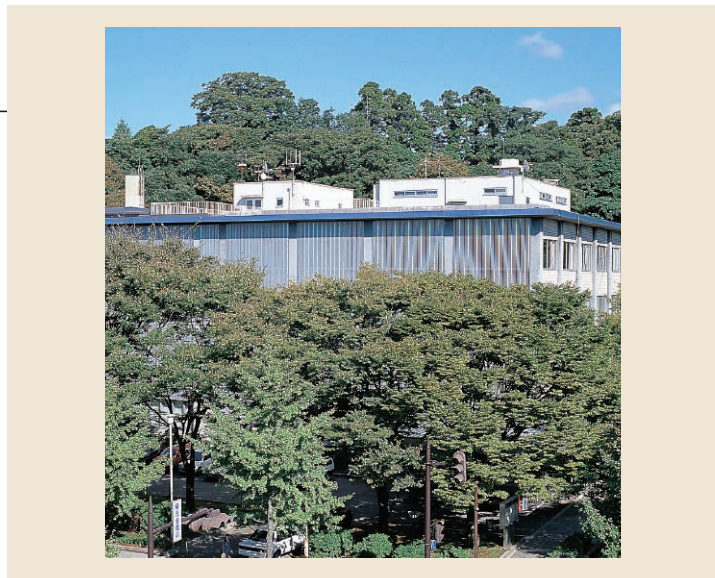


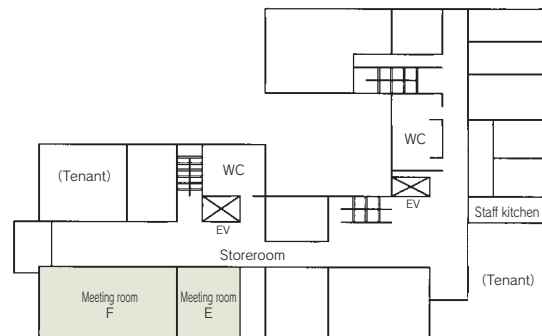
3 Ishikawa Prefecture Social Welfare Hall

3-1-10 Honda-machi, Kanazawa 920-8557
 TEL: 076-223-9552 FAX: 076-223-9563

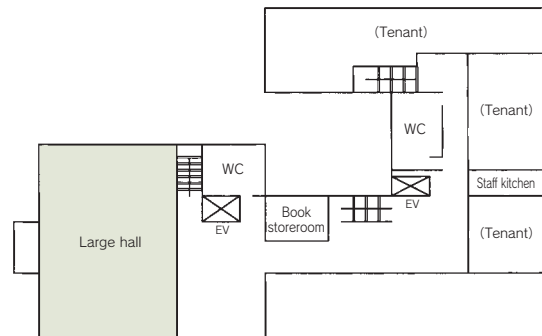


Floor plan

■ 3F



■ 4F



■ Number of seats
208 seats (Large Hall)



■ Traffic access
 20-min bus ride from JR Kanazawa Station
 (Get off at Honda-machi and walk for 2 min.)
 15 min by taxi from JR Kanazawa Station



■ Hours
 9:00am~5:00pm
 Closed: National holidays, year-end and New Year's holidays (Dec. 29~Jan. 3)

■ Date to start accepting reservation
 One month before the date of use
 Limited to public events with the purpose of promoting social welfare



■ Accommodation
 None



■ Restaurants/Cafés
 None



■ Parking Capacity
 None



■ Remarks
 None

■ Convention site

Site name	Floor	Area (㎡)	Width×Depth (m) (m)	Ceiling height (m)	Capacity (persons)					Remarks
					Fixed seats	School	Theater	Seated	Buffet	
Large hall	4	376	(16.5×22.8)	4.2	—	—	208	—	—	
Meeting room E	3	52	—	2.5	—	20	—	—	—	
Meeting room F	3	161	—	2.5	—	44	—	—	—	

Width × Depth and the floor area may differ depending on the shape of the room.